

HIGHLIGHTS OF PRESCRIBING INFORMATION

These highlights do not include all the information needed to use PLUVICTO safely and effectively. See full prescribing information for PLUVICTO.

PLUVICTO® (lutetium Lu 177 vipivotide tetraxetan) injection, for intravenous use

Initial U.S. Approval: 2022

INDICATIONS AND USAGE

PLUVICTO is a radioligand therapeutic agent indicated for the treatment of adult patients with prostate-specific membrane antigen (PSMA)-positive metastatic castration-resistant prostate cancer (mCRPC) who have been treated with androgen receptor (AR) pathway inhibition and taxane-based chemotherapy. (1)

DOSAGE AND ADMINISTRATION

- Select patients for treatment using LOCAMETZ® or an approved PSMA-11 imaging agent based on PSMA expression in tumors. (2.2)
- Recommended Dosage: Administer 7.4 GBq (200 mCi) every 6 weeks for up to 6 doses. (2.3)
- Dose interruption, reduction, or permanent discontinuation may be required due to adverse reactions. (2.4)

DOSAGE FORMS AND STRENGTHS

Injection: 1,000 MBq/mL (27 mCi/mL) in a single-dose vial. (3)

CONTRAINDICATIONS

None. (4)

WARNINGS AND PRECAUTIONS

- Risk From Radiation Exposure:** Minimize radiation exposure during and after treatment with PLUVICTO consistent with institutional good

radiation safety practices and patient treatment procedures. Ensure patients increase oral fluid intake and advise patients to void as often as possible to reduce bladder radiation. (5.1)

- Myelosuppression:** Perform complete blood counts. Withhold, reduce dose, or permanently discontinue PLUVICTO and clinically treat based on severity. (2.4, 5.2)
- Renal Toxicity:** Advise patients to remain well hydrated and to urinate frequently. Perform kidney function laboratory tests. Withhold, reduce dose, or permanently discontinue PLUVICTO based on severity. (2.4, 5.3)
- Embryo-Fetal Toxicity:** Can cause fetal harm. Advise male patients with female partners of reproductive potential to use effective contraception. (5.4, 8.1, 8.3)
- Infertility:** PLUVICTO may cause temporary or permanent infertility. (5.5, 8.3)

ADVERSE REACTIONS

Most common adverse reactions (≥ 20%) are fatigue, dry mouth, nausea, anemia, decreased appetite, and constipation. (6.1)

Most common laboratory abnormalities (≥ 30%) are decreased lymphocytes, decreased hemoglobin, decreased leukocytes, decreased platelets, decreased calcium, and decreased sodium. (6.1)

To report SUSPECTED ADVERSE REACTIONS, contact Novartis Pharmaceuticals Corporation at 1-888-669-6682 or FDA at 1-800-FDA-1088 or www.fda.gov/medwatch.

See 17 for PATIENT COUNSELING INFORMATION.

Revised: 10/2022

FULL PRESCRIBING INFORMATION: CONTENTS*

1	INDICATIONS AND USAGE	8.2	Lactation
2	DOSAGE AND ADMINISTRATION	8.3	Females and Males of Reproductive Potential
2.1	Important Safety Instructions	8.4	Pediatric Use
2.2	Patient Selection	8.5	Geriatric Use
2.3	Recommended Dosage	8.6	Renal Impairment
2.4	Dosage Modifications for Adverse Reactions	10	OVERDOSAGE
2.5	Preparation and Administration	11	DESCRIPTION
2.6	Radiation Dosimetry	11.1	Physical Characteristics
3	DOSAGE FORMS AND STRENGTHS	11.2	External Radiation
4	CONTRAINDICATIONS	12	CLINICAL PHARMACOLOGY
5	WARNINGS AND PRECAUTIONS	12.1	Mechanism of Action
5.1	Risk From Radiation Exposure	12.2	Pharmacodynamics
5.2	Myelosuppression	12.3	Pharmacokinetics
5.3	Renal Toxicity	13	NONCLINICAL TOXICOLOGY
5.4	Embryo-Fetal Toxicity	13.1	Carcinogenesis, Mutagenesis, Impairment of Fertility
5.5	Infertility	14	CLINICAL STUDIES
6	ADVERSE REACTIONS	16	HOW SUPPLIED/STORAGE AND HANDLING
6.1	Clinical Trials Experience	17	PATIENT COUNSELING INFORMATION
8	USE IN SPECIFIC POPULATIONS		
8.1	Pregnancy		

*Sections or subsections omitted from the full prescribing information are not listed.

FULL PRESCRIBING INFORMATION

1 INDICATIONS AND USAGE

PLUVICTO is indicated for the treatment of adult patients with prostate-specific membrane antigen (PSMA)-positive metastatic castration-resistant prostate cancer (mCRPC) who have been treated with androgen receptor (AR) pathway inhibition and taxane-based chemotherapy.

2 DOSAGE AND ADMINISTRATION

2.1 Important Safety Instructions

PLUVICTO is a radiopharmaceutical; handle with appropriate safety measures to minimize radiation exposure [*see Warnings and Precautions (5.1)*]. Use waterproof gloves and effective radiation shielding when handling PLUVICTO.

Radiopharmaceuticals, including PLUVICTO, should be used by or under the control of healthcare providers who are qualified by specific training and experience in the safe use and handling of radiopharmaceuticals, and whose experience and training have been approved by the appropriate governmental agency authorized to license the use of radiopharmaceuticals.

2.2 Patient Selection

Select patients with previously treated mCRPC for treatment with PLUVICTO using LOCAMETZ or another approved PSMA-11 imaging agent based on PSMA expression in tumors. Additional selection criteria were used in the VISION study [*see Clinical Studies (14)*].

Refer to the prescribing information for the PSMA imaging agent.

2.3 Recommended Dosage

The recommended PLUVICTO dosage is 7.4 GBq (200 mCi) intravenously every 6 weeks for up to 6 doses, or until disease progression, or unacceptable toxicity.

2.4 Dosage Modifications for Adverse Reactions

Recommended dosage modifications of PLUVICTO for adverse reactions are provided in Table 1. Management of adverse reactions may require temporary dose interruption (extending the dosing interval from every 6 weeks up to every 10 weeks), dose reduction or permanent discontinuation of treatment with PLUVICTO. If a treatment delay due to an adverse reaction persists for > 4 weeks, treatment with PLUVICTO must be discontinued. The dose of PLUVICTO may be reduced by 20% to 5.9 GBq (160 mCi) once; do not re-escalate dose. If a patient has further adverse reactions that would require an additional dose reduction, treatment with PLUVICTO must be discontinued.

Table 1: Recommended Dosage Modifications of PLUVICTO for Adverse Reactions

Adverse reaction	Severity	Dosage modification
Myelosuppression (Anemia, thrombocytopenia, leukopenia, or neutropenia) <i>[see Warnings and Precautions (5.2)]</i>	Grade 2	Withhold PLUVICTO until improvement to Grade 1 or baseline.
	Grade \geq 3	Withhold PLUVICTO until improvement to Grade 1 or baseline. Reduce PLUVICTO dose by 20% to 5.9 GBq (160 mCi).
	Recurrent Grade \geq 3 myelosuppression after one dose reduction	Permanently discontinue PLUVICTO.

Adverse reaction	Severity	Dosage modification
Renal toxicity <i>[see Warnings and Precautions (5.3)]</i>	Defined as: <ul style="list-style-type: none"> Confirmed serum creatinine increase (Grade ≥ 2) Confirmed CLcr < 30 mL/min; calculate using Cockcroft-Gault with actual body weight 	Withhold PLUVICTO until improvement.
	Defined as: <ul style="list-style-type: none"> Confirmed $\geq 40\%$ increase from baseline serum creatinine and <ul style="list-style-type: none"> Confirmed $> 40\%$ decrease from baseline CLcr; calculate using Cockcroft-Gault with actual body weight 	Withhold PLUVICTO until improvement or return to baseline. Reduce PLUVICTO dose by 20% to 5.9 GBq (160 mCi).
	Grade ≥ 3 renal toxicity	Permanently discontinue PLUVICTO.
	Recurrent renal toxicity after one dose reduction	Permanently discontinue PLUVICTO.
Dry mouth <i>[see Adverse Reactions (6.1)]</i>	Grade 2	Withhold PLUVICTO until improvement or return to baseline. Consider reducing PLUVICTO dose by 20% to 5.9 GBq (160 mCi).
	Grade 3	Withhold PLUVICTO until improvement or return to baseline. Reduce PLUVICTO dose by 20% to 5.9 GBq (160 mCi).
	Recurrent Grade 3 dry mouth after one dose reduction	Permanently discontinue PLUVICTO.
Gastrointestinal toxicity <i>[see Adverse Reactions (6.1)]</i>	Grade ≥ 3 (not amenable to medical intervention)	Withhold PLUVICTO until improvement to Grade 2 or baseline. Reduce PLUVICTO dose by 20% to 5.9 GBq (160 mCi).
	Recurrent Grade ≥ 3 gastrointestinal toxicity after one dose reduction	Permanently discontinue PLUVICTO.
Fatigue <i>[see Adverse Reactions (6.1)]</i>	Grade ≥ 3	Withhold PLUVICTO until improvement to Grade 2 or baseline.
Electrolyte or metabolic abnormalities <i>[see Adverse Reactions (6.1)]</i>	Grade ≥ 2	Withhold PLUVICTO until improvement to Grade 1 or baseline.
AST or ALT elevation <i>[see Adverse Reactions (6.1)]</i>	AST or ALT > 5 times ULN in the absence of liver metastases	Permanently discontinue PLUVICTO.
Other non-hematologic toxicity <i>[see Adverse Reactions (6.1)]</i>	Any unacceptable toxicity	Permanently discontinue PLUVICTO.
	Any serious adverse reaction that requires treatment delay of > 4 weeks	Permanently discontinue PLUVICTO.
	Any recurrent Grade 3 or 4 or persistent and intolerable Grade 2 adverse reaction after one dose reduction	Permanently discontinue PLUVICTO.

Abbreviations: CLcr, creatinine clearance; AST, aspartate aminotransferase; ALT, alanine aminotransferase; ULN, upper limit of normal. Grading according to most current Common Terminology Criteria for Adverse Events (CTCAE).

2.5 Preparation and Administration

Preparation Instructions

- Use aseptic technique and radiation shielding when handling or administering PLUVICTO, using tongs as needed to minimize radiation exposure.
- Inspect the vial visually under a shielded screen for particulate matter and discoloration prior to administration. Discard the vial if particulates or discoloration are present.
- Do not inject the PLUVICTO solution directly into any other intravenous solution.
- Confirm the amount of radioactivity delivered to the patient with an appropriately calibrated dose calibrator prior to and after PLUVICTO administration.
- Dispose of any unused medicinal product or waste material in accordance with local and federal laws.

Administration Instructions

The recommended dosage of PLUVICTO may be administered intravenously as an injection using a disposable syringe fitted with a syringe shield (with or without a syringe pump), as an infusion using the gravity method (with or without an infusion pump), or as an infusion using the vial (with a peristaltic infusion pump).

A reduced dose of PLUVICTO should be administered using the syringe method (with or without a syringe pump) or the vial method (with a peristaltic infusion pump). Using the gravity method to administer a reduced dose of PLUVICTO is not recommended since it may result in delivery of the incorrect volume of PLUVICTO, if the dose is not adjusted prior to administration.

Prior to administration, flush the intravenous catheter used exclusively for PLUVICTO administration with ≥ 10 mL of 0.9% sterile sodium chloride solution to ensure patency and to minimize the risk of extravasation. Manage cases of extravasation as per institutional guidelines.

Instructions for the Syringe Method (With or Without a Syringe Pump)

- After disinfecting the vial stopper, withdraw an appropriate volume of PLUVICTO solution to deliver the desired radioactivity by using a disposable syringe fitted with a syringe shield and a disposable sterile needle.
- Administer PLUVICTO to the patient by slow intravenous push within approximately 1 to 10 minutes (either with a syringe pump or manually without a syringe pump) via an intravenous catheter that is pre-filled with 0.9% sterile sodium chloride solution and that is used exclusively for PLUVICTO administration to the patient.
- Once the desired PLUVICTO radioactivity has been administered, perform an intravenous flush of ≥ 10 mL of 0.9% sterile sodium chloride solution through the intravenous catheter to the patient.

Instructions for the Gravity Method (With or Without an Infusion Pump)

- Insert a 2.5 cm, 20 gauge needle (short needle) into the PLUVICTO vial and connect via a catheter to 500 mL 0.9% sterile sodium chloride solution (used to transport the PLUVICTO solution during the infusion). Ensure that the short needle does not touch the PLUVICTO solution in the vial and do not connect the short needle directly to the patient. Do not allow the sodium chloride solution to flow into the PLUVICTO vial prior to the initiation of the PLUVICTO infusion and do not inject the PLUVICTO solution directly into the sodium chloride solution.
- Insert a second needle that is 9 cm, 18 gauge (long needle) into the PLUVICTO vial, ensuring that the long needle touches and is secured to the bottom of the PLUVICTO vial during the entire infusion. Connect the long needle to the patient by an intravenous catheter that is pre-filled with 0.9% sterile sodium chloride solution and that is used exclusively for the PLUVICTO infusion into the patient.
- Use a clamp or an infusion pump to regulate the flow of the sodium chloride solution via the short needle into the PLUVICTO vial (the sodium chloride solution entering the vial through the short needle will carry the PLUVICTO solution from the vial to the patient via the intravenous catheter connected to the long needle within approximately 30 minutes).
- During the infusion, ensure that the level of solution in the PLUVICTO vial remains constant.

- Disconnect the vial from the long needle line and clamp the saline line once the level of radioactivity is stable for at least five minutes.
- Follow the infusion with an intravenous flush of ≥ 10 mL of 0.9% sterile sodium chloride solution through the intravenous catheter to the patient.

Instructions for the Vial Method (With a Peristaltic Infusion Pump)

- Insert a 2.5 cm, 20 gauge needle (short venting needle) into the PLUVICTO vial. Ensure that the short needle does not touch the PLUVICTO solution in the vial and do not connect the short needle directly to the patient or to the peristaltic infusion pump.
- Insert a second needle that is 9 cm, 18 gauge (long needle) into the PLUVICTO vial, ensuring that the long needle touches and is secured to the bottom of the PLUVICTO vial during the entire infusion. Connect the long needle and a 0.9% sterile sodium chloride solution to a 3-way stopcock valve via appropriate tubing.
- Connect the output of the 3-way stopcock valve to tubing installed on the input side of the peristaltic infusion pump following the pump manufacturer's instructions.
- Pre-fill the line by opening the 3-way stopcock valve and pumping the PLUVICTO solution through the tubing until it reaches the exit of the valve.
- Pre-fill the intravenous catheter which will be connected to the patient by opening the 3-way stopcock valve to the 0.9% sterile sodium chloride solution and pumping the 0.9% sterile sodium chloride solution until it exits the end of the catheter tubing.
- Connect the pre-filled intravenous catheter to the patient and set the 3-way stopcock valve such that the PLUVICTO solution is in line with the peristaltic infusion pump.
- Infuse an appropriate volume of PLUVICTO solution at approximately 25 mL/h to deliver the desired radioactivity.
- When the desired PLUVICTO radioactivity has been delivered, stop the peristaltic infusion pump and then change the position of the 3-way stopcock valve so that the peristaltic infusion pump is in line with the 0.9% sterile sodium chloride solution. Restart the peristaltic infusion pump and infuse an intravenous flush of ≥ 10 mL of 0.9% sterile sodium chloride solution through the intravenous catheter to the patient.

2.6 Radiation Dosimetry

Dosimetry of lutetium Lu 177 vipivotide tetraxetan was collected in 29 patients in the VISION sub-study, in order to calculate whole body and organ radiation dosimetry. The mean and standard deviation (SD) of the estimated radiation absorbed doses to different organs for adult patients receiving PLUVICTO are shown in Table 2. The organs with the highest radiation absorbed doses are lacrimal glands, salivary glands, large intestine (left and right colon), kidneys, and urinary bladder wall. The maximum penetration of lutetium-177 in tissue is approximately 2 mm and the mean penetration is 0.67 mm.

Table 2: Estimated Radiation Absorbed Dose for PLUVICTO in VISION

Organ*	Absorbed dose per unit activity (Gy/GBq) N = 29		Calculated absorbed dose for 7.4 GBq administration (Gy)		Calculated absorbed dose for 6 x 7.4 GBq (44.4 GBq cumulative activity) (Gy)	
	Mean	SD	Mean	SD	Mean	SD
Adrenals	0.033	0.025	0.24	0.19	1.5	1.1
Brain	0.007	0.005	0.049	0.035	0.30	0.22
Esophagus	0.025	0.026	0.18	0.19	1.1	1.1
Eyes	0.022	0.024	0.16	0.18	0.99	1.1
Gallbladder wall	0.028	0.026	0.20	0.19	1.2	1.1
Heart wall	0.17	0.12	1.2	0.83	7.8	5.2
Kidneys	0.43	0.16	3.1	1.2	19	7.3
Lacrimal glands	2.1	0.47	15	3.4	92	21
Left colon	0.58	0.14	4.1	1.0	26	6.0
Liver	0.090	0.044	0.64	0.32	4.0	2.0
Lungs	0.11	0.11	0.76	0.81	4.7	4.9
Pancreas	0.027	0.026	0.19	0.19	1.2	1.1
Prostate	0.027	0.026	0.19	0.19	1.2	1.1

Organ*	Absorbed dose per unit activity (Gy/GBq) N = 29		Calculated absorbed dose for 7.4 GBq administration (Gy)		Calculated absorbed dose for 6 x 7.4 GBq (44.4 GBq cumulative activity) (Gy)	
	Mean	SD	Mean	SD	Mean	SD
Rectum	0.56	0.14	4.0	1.1	25	6.2
Right colon	0.32	0.078	2.3	0.58	14	3.4
Salivary glands	0.63	0.36	4.5	2.6	28	16
Small intestine	0.071	0.031	0.50	0.23	3.1	1.4
Spleen	0.067	0.027	0.48	0.20	3.0	1.2
Stomach wall	0.025	0.026	0.18	0.19	1.1	1.1
Testes	0.023	0.025	0.16	0.18	1.0	1.1
Thymus	0.025	0.026	0.18	0.19	1.1	1.1
Thyroid	0.26	0.37	1.8	2.7	11	16
Total body	0.037	0.027	0.27	0.20	1.6	1.2
Urinary bladder wall	0.32	0.025	2.3	0.19	14	1.1

*Estimated radiation absorbed dose for bone marrow is not included [see *Warnings and Precautions (5.2)*].

3 DOSAGE FORMS AND STRENGTHS

Injection: 1,000 MBq/mL (27 mCi/mL) of lutetium Lu 177 vipivotide tetraxetan as a clear and colorless to slightly yellow solution in a single-dose vial.

4 CONTRAINDICATIONS

None.

5 WARNINGS AND PRECAUTIONS

5.1 Risk From Radiation Exposure

PLUVICTO contributes to a patient's overall long-term cumulative radiation exposure. Long-term cumulative radiation exposure is associated with an increased risk for cancer.

Minimize radiation exposure to patients, medical personnel, and household contacts during and after treatment with PLUVICTO consistent with institutional good radiation safety practices, patient treatment procedures, Nuclear Regulatory Commission patient-release guidance, and instructions to the patient for follow-up radiation protection at home.

Ensure patients increase oral fluid intake and advise patients to void as often as possible to reduce bladder radiation.

Before the patient is released, the healthcare provider should explain the necessary radioprotection precautions that the patient should follow to minimize radiation exposure to others [see *Patient Counseling Information (17)*]. Following administration of PLUVICTO, advise patients to limit close contact (less than 3 feet) with household contacts for 2 days or with children and pregnant women for 7 days. Following administration of PLUVICTO, advise patients to refrain from sexual activity for 7 days. Following administration of PLUVICTO, advise patients to sleep in a separate bedroom from household contacts for 3 days, from children for 7 days, or from pregnant women for 15 days.

5.2 Myelosuppression

PLUVICTO can cause severe and life-threatening myelosuppression, including anemia, thrombocytopenia, leukopenia, and neutropenia. In the VISION study, Grade 3 or 4 decreased hemoglobin (15%), decreased platelets (9%), decreased leukocytes (7%), and decreased neutrophils (4.5%) occurred in patients treated with PLUVICTO. Grade ≥ 3 pancytopenia occurred in 1.1% (which includes two fatal events) in patients treated with PLUVICTO. Two deaths (0.4%) due to intracranial hemorrhage and subdural hematoma in association with thrombocytopenia were observed in patients who received PLUVICTO. One death due to sepsis and concurrent neutropenia was observed in patients who received PLUVICTO.

Perform complete blood counts before and during treatment with PLUVICTO. Withhold, reduce dose, or permanently discontinue PLUVICTO and clinically treat patients based on the severity of myelosuppression [see *Dosage and Administration (2.4)*].

5.3 Renal Toxicity

PLUVICTO can cause severe renal toxicity. In the VISION study, Grade 3 or 4 acute kidney injury (3%) and increased creatinine (0.9%) occurred in patients treated with PLUVICTO.

Advise patients to remain well hydrated and to urinate frequently before and after administration of PLUVICTO. Perform kidney function laboratory tests, including serum creatinine and calculated CL_{cr}, before and during treatment with PLUVICTO. Withhold, reduce dose, or permanently discontinue PLUVICTO based on the severity of renal toxicity [see *Dosage and Administration (2.4)*].

5.4 Embryo-Fetal Toxicity

The safety and efficacy of PLUVICTO have not been established in females. Based on its mechanism of action, PLUVICTO can cause fetal harm [see *Clinical Pharmacology (12.1)*]. No animal studies using lutetium Lu 177 vipivotide tetraxetan have been conducted to evaluate its effect on female reproduction and embryo-fetal development; however, all radiopharmaceuticals, including PLUVICTO, have the potential to cause fetal harm. Advise male patients with female partners of reproductive potential to use effective contraception during treatment with PLUVICTO and for 14 weeks after the last dose [see *Use in Specific Populations (8.1, 8.3)*].

5.5 Infertility

PLUVICTO may cause infertility in males. The recommended cumulative dose of 44.4 GBq of PLUVICTO results in a radiation absorbed dose to the testes within the range where PLUVICTO may cause temporary or permanent infertility [see *Use in Specific Populations (8.3)*].

6 ADVERSE REACTIONS

The following clinically significant adverse reactions are described elsewhere in the labeling:

- Myelosuppression [see *Warnings and Precautions (5.2)*]
- Renal Toxicity [see *Warnings and Precautions (5.3)*]

6.1 Clinical Trials Experience

Because clinical trials are conducted under widely varying conditions, adverse reaction rates observed in the clinical trials of a drug cannot be directly compared to rates in the clinical trials of another drug and may not reflect the rates observed in practice.

The safety of PLUVICTO was evaluated in the VISION study in patients with progressive, PSMA-positive mCRPC [see *Clinical Studies (14)*]. Of the 831 patients randomized, 734 patients received at least one dose of randomized treatment. Patients received at least one dose of either PLUVICTO 7.4 GBq (200 mCi) administered every 6 to 10 weeks plus BSoC (N = 529) or BSoC alone (N = 205). The median duration of exposure to randomized treatment was 7.8 months (range, 0.3 to 24.9) for patients who received PLUVICTO plus BSoC. Among patients who received PLUVICTO plus BSoC, the median number of doses of PLUVICTO received was 5 (range, 1 to 6). The median cumulative dose of PLUVICTO was 37.5 GBq (range, 7.0 to 48.3). The median duration of follow-up was 14.8 months for patients receiving PLUVICTO plus BSoC.

Serious adverse reactions occurred in 36% of patients who received PLUVICTO plus BSoC. Serious adverse reactions in > 1% of patients who received PLUVICTO plus BSoC included hemorrhage (4%), musculoskeletal pain (3.8%), sepsis (3.2%), anemia (2.8%), urinary tract infection (2.6%), acute kidney injury (1.7%), pneumonia (1.7%), pancytopenia (1.3%), pyrexia (1.3%), spinal cord compression (1.1%), and pulmonary embolism (1.1%).

Fatal adverse reactions occurred in 2.8% of patients who received PLUVICTO plus BSoC, including sepsis (0.9%), pancytopenia (0.6%), hepatic failure (0.4%), intracranial hemorrhage (0.2%), subdural hematoma (0.2%), ischemic stroke (0.2%), COVID-19 (0.2%), and aspiration pneumonia (0.2%).

PLUVICTO was permanently discontinued due to adverse reactions in 12% of patients. Adverse reactions leading to permanent discontinuation of PLUVICTO in ≥ 1% of patients who received PLUVICTO plus BSoC were anemia (2.8%), thrombocytopenia (2.8%), and leukopenia (including neutropenia) (1.7%).

Adverse reactions leading to a dose interruption of PLUVICTO occurred in 16% of patients. The most frequent (≥ 3%) adverse reactions leading to a dose interruption of PLUVICTO in patients who received PLUVICTO plus BSoC were anemia (5%) and thrombocytopenia (3.6%).

Adverse reactions leading to a dose reduction of PLUVICTO occurred in 6% of patients. The most frequent ($\geq 1\%$) adverse reactions leading to a dose reduction of PLUVICTO in patients who received PLUVICTO plus BSoC were thrombocytopenia (1.9%) and anemia (1.3%).

The most common adverse reactions ($\geq 20\%$) occurring at a higher incidence in patients who received PLUVICTO plus BSoC were fatigue, dry mouth, nausea, anemia, decreased appetite, and constipation.

The most common laboratory abnormalities that worsened from baseline in $\geq 30\%$ of patients who received PLUVICTO plus BSoC were decreased lymphocytes, decreased hemoglobin, decreased leukocytes, decreased platelets, decreased calcium, and decreased sodium.

Table 3 and Table 4 summarize the incidence of adverse reactions and laboratory abnormalities, respectively.

Table 3: Adverse Reactions ($\geq 5\%$) in Patients With PSMA-positive mCRPC Who Received PLUVICTO Plus BSoC in VISION

Adverse reactions	PLUVICTO plus BSoC (N = 529)		BSoC (N = 205)	
	All Grades (%)	Grades 3 to 4 (%)	All Grades (%)	Grades 3 to 4 (%)
General disorders				
Fatigue	43	6	23	1.5
Decreased appetite	21	1.9	15	0.5
Weight decreased	11	0.4	9	0
Peripheral edema ^a	10	0.4	7	0.5
Pyrexia	7	0.4	3.4	0
Gastrointestinal disorders				
Dry mouth ^b	39	0	0.5	0
Nausea	35	1.3	17	0.5
Constipation	20	1.1	11	0.5
Vomiting ^c	19	0.9	6	0.5
Diarrhea	19	0.8	2.9	0.5
Abdominal pain ^d	11	1.1	6	0.5
Blood and lymphatic system disorders				
Anemia	32	13	13	4.9
Thrombocytopenia	17	8	4.4	1
Renal and urinary disorders				
Urinary tract infection ^e	12	3.8	1	0.5
Acute kidney injury ^f	9	3.2	6	2.9
Nervous system disorders				
Dizziness	8	0.9	4.4	0
Headache	7	0.8	2	0
Dysgeusia ^g	7	0	1.5	0

Abbreviation: BSoC, best standard of care.

^aPeripheral edema includes peripheral edema, fluid retention, and fluid overload.

^bDry mouth includes dry mouth, apyralism, and dry throat.

^cVomiting includes vomiting and retching.

^dAbdominal pain includes abdominal pain, abdominal pain upper, abdominal discomfort, abdominal pain lower, abdominal tenderness, and gastrointestinal pain.

^eUrinary tract infection includes urinary tract infection, cystitis, and cystitis bacterial.

^fAcute kidney injury includes blood creatinine increased, acute kidney injury, renal failure, and blood urea increased.

^gDysgeusia includes dysgeusia and taste disorder.

Clinically relevant adverse reactions in $< 5\%$ of patients who received PLUVICTO plus BSoC included dry eye, vertigo, and pancytopenia (including bicytopenia).

Table 4: Select Laboratory Abnormalities (≥ 10%) That Worsened from Baseline in Patients With PSMA-positive mCRPC Who Received PLUVICTO Plus BSoC (Between Arm Difference of ≥ 5% All Grades) in VISION

Laboratory abnormalities	PLUVICTO plus BSoC ^a		BSoC ^b	
	All Grades (%)	Grades 3 to 4 (%)	All Grades (%)	Grades 3 to 4 (%)
Chemistry				
Decreased calcium	39	2.5	28	3
Decreased sodium	33	0.6 ^c	23	1
Increased aspartate aminotransferase	28	1.1	18	1 ^c
Increased creatinine	24	0.9 ^c	14	0.5 ^c
Increased potassium	24	0.6	18	0.5 ^c
Increased sodium	11	0 ^c	5	0 ^c
Hematology				
Decreased lymphocytes	85	47	51	18
Decreased hemoglobin	63	15 ^c	34	7 ^c
Decreased leukocytes	56	7	22	2
Decreased platelets	45	9	20	2.5
Decreased neutrophils	28	4.5	9	0.5

Abbreviation: BSoC, best standard of care.

^aThe denominator used to calculate the rate for each laboratory parameter varied from 506 to 529 based on the number of patients with a baseline value and at least one post-treatment value.

^bThe denominator used to calculate the rate for each laboratory parameter varied from 194 to 198 based on the number of patients with a baseline value and at least one post-treatment value.

^cNo Grade 4 laboratory abnormalities worsening from baseline were reported.

8 USE IN SPECIFIC POPULATIONS

8.1 Pregnancy

Risk Summary

The safety and efficacy of PLUVICTO have not been established in females. Based on its mechanism of action, PLUVICTO can cause fetal harm [see *Clinical Pharmacology (12.1)*]. There are no available data on PLUVICTO use in pregnant females. No animal studies using lutetium Lu 177 vipivotide tetraxetan have been conducted to evaluate its effect on female reproduction and embryo-fetal development; however, all radiopharmaceuticals, including PLUVICTO, have the potential to cause fetal harm.

8.2 Lactation

Risk Summary

The safety and efficacy of PLUVICTO have not been established in females. There are no data on the presence of lutetium Lu 177 vipivotide tetraxetan in human milk or its effects on the breastfed child or on milk production.

8.3 Females and Males of Reproductive Potential

Contraception

Males

Based on its mechanism of action, advise male patients with female partners of reproductive potential to use effective contraception during treatment with PLUVICTO and for 14 weeks after the last dose [see *Clinical Pharmacology (12.1)*, *Nonclinical Toxicology (13.1)*].

Infertility

The recommended cumulative dose of 44.4 GBq of PLUVICTO results in a radiation absorbed dose to the testes within the range where PLUVICTO may cause temporary or permanent infertility.

8.4 Pediatric Use

The safety and effectiveness of PLUVICTO in pediatric patients have not been established.

8.5 Geriatric Use

Of the 529 patients who received at least one dose of PLUVICTO plus BSoC in the VISION study, 387 patients (73%) were 65 years or older and 143 patients (27%) were 75 years or older. No overall differences in effectiveness were observed between patients ≥ 75 years of age and younger patients. Serious adverse reactions occurred in 11% of patients ≥ 75 years of age and in 11% of younger patients. Grade ≥ 3 adverse reactions occurred in 40% of patients ≥ 75 years of age and in 31% of younger patients.

8.6 Renal Impairment

Exposure of lutetium Lu 177 vipivotide tetraxetan is expected to increase with the degree of renal impairment [see *Clinical Pharmacology (12.3)*]. No dose adjustment is recommended for patients with mild (baseline CLcr 60 to 89 mL/min by Cockcroft-Gault) to moderate (CLcr 30 to 59 mL/min) renal impairment; however, patients with mild or moderate renal impairment may be at greater risk of toxicity. Frequently monitor renal function and adverse reactions in patients with mild to moderate renal impairment [see *Dosage and Administration (2.4)*]. The pharmacokinetics and safety of PLUVICTO have not been studied in patients with severe (CLcr 15 to 29 mL/min) renal impairment or end-stage renal disease.

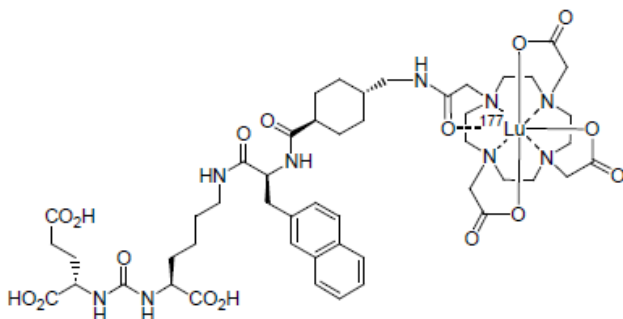
10 OVERDOSAGE

In the event of administration of a radiation overdose with PLUVICTO, reduce the radiation absorbed dose to the patient by increasing the elimination of the radionuclide from the body by frequent micturition or by forced diuresis and frequent bladder voiding. Estimate the effective radiation dose that was applied and treat with additional supportive care measures as clinically indicated.

11 DESCRIPTION

PLUVICTO (lutetium Lu 177 vipivotide tetraxetan) is a radioligand therapeutic agent. Lutetium Lu 177 vipivotide tetraxetan is a PSMA-binding ligand bound to a DOTA chelator radiolabeled with lutetium-177.

The chemical name is 2-[4-[2-[[4-[[[(2S)-1-[[[(5S)-5-carboxy-5-[[[(1S)-1,3-dicarboxypropyl]carbamoylamino]pentyl]amino]-3-naphthalen-2-yl]-1-oxopropan-2-yl]carbamoyl]cyclohexyl]methylamino]-2-oxoethyl]-4,7,10-tris(carboxylatomethyl)-1,4,7,10-tetrazacyclododec-1-yl]acetate; lutetium-177(3+). The molecular mass is 1216.06 g/mol and the molecular formula is $C_{49}H_{68}^{177}LuN_9O_{16}$. The chemical structure for lutetium Lu 177 vipivotide tetraxetan is shown below:



PLUVICTO (lutetium Lu 177 vipivotide tetraxetan) 1,000 MBq/mL (27 mCi/mL) Injection is supplied as a sterile, clear, colorless to slightly yellow solution for intravenous use. Each single-dose vial contains acetic acid (0.30 mg/mL), sodium acetate (0.41 mg/mL), gentisic acid (0.39 mg/mL), sodium ascorbate (50.0 mg/mL), pentetic acid (0.10 mg/mL), and water for injection (q.s. to 1 mL). The pH range of the solution is 4.5 to 7.0.

11.1 Physical Characteristics

Lutetium-177 decays to a stable hafnium-177 with a physical half-life of 6.647 days by emitting beta-minus radiation with a maximum energy of 0.498 MeV (79%) and photonic radiation (γ) of 0.208 MeV (11%) and 0.113 MeV (6.4%).

The main radiations of lutetium-177 are detailed in Table 5.

Table 5: Lutetium-177 Main Radiations

Radiation	Energy (keV)	I β -%	I γ %
β^-	176.5	12.2	
β^-	248.1	0.05	
β^-	384.9	9.1	
β^-	497.8	78.6	
γ	71.6		0.15
γ	112.9		6.40
γ	136.7		0.05
γ	208.4		11.0
γ	249.7		0.21
γ	321.3		0.22

11.2 External Radiation

Table 6 summarizes the radioactive decay properties of lutetium-177.

Table 6: Physical Decay Chart: Lutetium-177 Physical Half-life = 6.647 days

Hours	Fraction remaining
0	1.000
1	0.996
2	0.991
5	0.979
10	0.958
24 (1 day)	0.901
48 (2 days)	0.812
72 (3 days)	0.731
120 (5 days)	0.594
168 (7 days)	0.482
336 (14 days)	0.232
720 (30 days)	0.044
1080 (45 days)	0.009

12 CLINICAL PHARMACOLOGY

12.1 Mechanism of Action

Lutetium Lu 177 vipivotide tetraxetan is a radioligand therapeutic agent. The active moiety of lutetium Lu 177 vipivotide tetraxetan is the radionuclide lutetium-177 which is linked to a moiety that binds to PSMA, a transmembrane protein that is expressed in prostate cancer, including mCRPC. Upon binding of lutetium Lu 177 vipivotide tetraxetan to PSMA-expressing cells, the beta-minus emission from lutetium-177 delivers radiation to PSMA-expressing cells, as well as to surrounding cells, and induces DNA damage which can lead to cell death.

12.2 Pharmacodynamics

Lutetium Lu 177 vipivotide tetraxetan exposure-efficacy relationships and the time course of pharmacodynamic response have not been fully characterized.

Cardiac Electrophysiology

At the recommended dosage, PLUVICTO does not cause large mean increases (> 20 ms) in the QTc interval.

12.3 Pharmacokinetics

Pharmacokinetics of lutetium Lu 177 vipivotide tetraxetan are expressed as geometric mean (geometric mean coefficient of variation) unless otherwise specified.

The blood lutetium Lu 177 vipivotide tetraxetan area under the curve (AUC) is 52.3 ng.h/mL (31.4%) and the maximum blood concentration is 6.58 ng/mL (43.5%) at the recommended dosage.

Distribution

Lutetium Lu 177 vipivotide tetraxetan volume of distribution is 123 L (78.1%).

Within 2.5 hours of administration, lutetium Lu 177 vipivotide tetraxetan distributes to gastrointestinal tract, liver, lungs, kidneys, heart wall, bone marrow, and salivary glands.

Vipivotide tetraxetan and non-radioactive lutetium vipivotide tetraxetan are 60% to 70% bound to human plasma proteins.

Elimination

The lutetium Lu 177 vipivotide tetraxetan terminal elimination half-life is 41.6 hours (68.8%) and the clearance (CL) is 2.04 L/h (31.5%).

Excretion

Lutetium Lu 177 vipivotide tetraxetan is primarily eliminated renally.

Specific Populations

Exposure (AUC) of lutetium Lu 177 vipivotide tetraxetan increased with decreasing creatinine clearance (CL_{cr}). The effect of baseline CL_{cr} < 54 mL/min on lutetium Lu 177 vipivotide tetraxetan pharmacokinetics has not been studied.

Drug Interaction Studies

In Vitro Studies

CYP450 enzymes: Vipivotide tetraxetan is not a substrate of cytochrome P450 (CYP450) enzymes. Vipivotide tetraxetan did not induce CYP1A2, 2B6 or 3A4; and did not inhibit CYP1A2, 2B6, 2C8, 2C9, 2C19, 2D6 or 3A *in vitro*.

Transporters: Vipivotide tetraxetan is not a substrate of BCRP, P-gp, MATE1, MATE2-K, OAT1, OAT3 or OCT2. Vipivotide tetraxetan did not inhibit BCRP, P-gp, MATE1, MATE2-K, OAT1, OAT3, OATP1B1, OATP1B3, OCT1 or OCT2 *in vitro*.

13 NONCLINICAL TOXICOLOGY

13.1 Carcinogenesis, Mutagenesis, Impairment of Fertility

Mutagenicity and carcinogenicity studies have not been conducted with lutetium Lu 177 vipivotide tetraxetan; however, radiation is a carcinogen and mutagen.

No animal studies were conducted to determine the effects of lutetium Lu 177 vipivotide tetraxetan on fertility.

14 CLINICAL STUDIES

The efficacy of PLUVICTO was evaluated in VISION (NCT03511664), a randomized (2:1), multicenter, open-label trial that evaluated PLUVICTO plus BSoC (N = 551) or BSoC alone (N = 280) in men with progressive, PSMA-positive mCRPC. Randomization was stratified by baseline lactate dehydrogenase (LDH), presence of liver metastases, ECOG PS score and inclusion of an AR pathway inhibitor as part of BSoC at the time of randomization. All patients received a GnRH analog or had prior bilateral orchiectomy. Patients were required to have received at least one AR pathway inhibitor, and 1 or 2 prior taxane-based chemotherapy regimens. Eligible patients were required to have PSMA-positive mCRPC defined as having at least one tumor lesion with gallium Ga 68 gozetotide uptake greater than normal liver. Patients were excluded if any lesions exceeding size criteria in short axis [organs \geq 1 cm, lymph nodes \geq 2.5 cm, bones (soft tissue component) \geq 1 cm] had uptake less than or equal to uptake in normal liver.

Patients received PLUVICTO 7.4 GBq (200 mCi) every 6 weeks for up to a total of 6 doses plus BSoC or BSoC alone. BSoC administered at the investigator's discretion included ketoconazole; radiation therapy to localized prostate cancer targets; bone-targeted agents; androgen-reducing agents; AR pathway inhibitors. Patients continued treatment for up to 4-6 doses, or until disease progression or unacceptable toxicity. Patients with stable disease or partial response after 4 doses of PLUVICTO plus BSoC received up to 2 additional doses per investigator's discretion.

The following patient demographics and baseline disease characteristics were balanced between the arms. The median age was 71 years (range, 40 to 94 years); 87% White; 7% Black or African American; 2.4% Asian; 92% had ECOG PS0-1;

8% had ECOG PS2. All patients had received at least one prior taxane-based chemotherapy regimen and 41% of patients received two. One prior AR pathway inhibitor had been administered to 51% of patients, 41% of patients received 2, and 8% of patients received 3 or more. During the treatment period, 53% of patients in the PLUVICTO plus BSoC arm and 68% of patients in the BSoC alone arm received at least one AR pathway inhibitor.

The major efficacy outcome measures were overall survival (OS) and radiographic progression-free survival (rPFS) by blinded independent central review (BICR) per Prostate Cancer Working Group 3 (PCWG3) criteria. An additional efficacy outcome measure included was overall response rate (ORR) by BICR per Response Evaluation Criteria in Solid Tumors (RECIST) v1.1.

VISION demonstrated a statistically significant improvement in both major efficacy outcome measures of OS and rPFS by BICR with PLUVICTO plus BSoC compared to treatment with BSoC alone. Interpretation of the magnitude of the rPFS effect was limited due to a high degree of censoring from early drop out in the control arm.

Efficacy results for VISION are presented in Table 7 and Figure 1.

Table 7: Efficacy Results in VISION

	PLUVICTO plus BSoC	BSoC
Overall survival (OS)	N = 551	N = 280
Deaths, n (%)	343 (62%)	187 (67%)
Median, months (95% CI) ^a	15.3 (14.2, 16.9)	11.3 (9.8, 13.5)
Hazard ratio (95% CI) ^b	0.62 (0.52, 0.74)	
P-value ^c	< 0.001	
Overall response rate (ORR)		
Patients with evaluable disease at baseline	N = 319	N = 120
ORR (CR + PR), n (%) (95% CI)	95 (30%) (25%, 35%)	2 (2%) (0%, 6%)
Complete response (CR), n (%)	18 (6%)	0 (0%)
Partial response (PR), n (%)	77 (24%)	2 (2%)
P-value ^d	< 0.001	

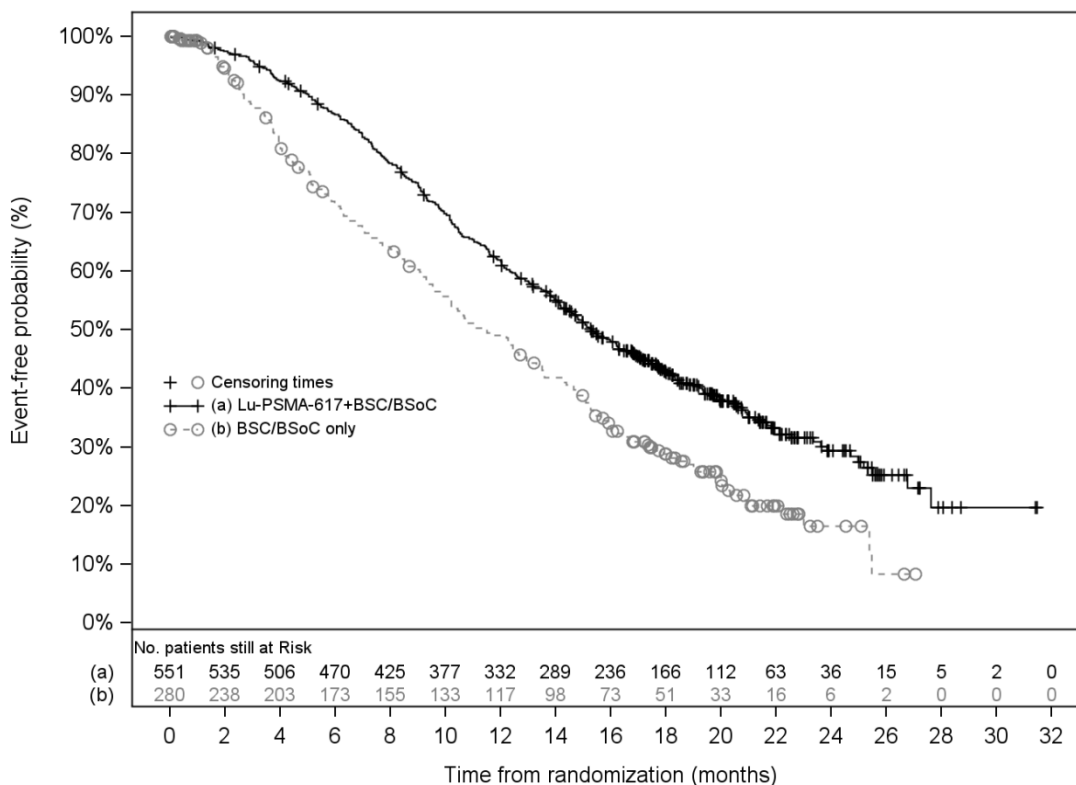
^aBased on Kaplan-Meier estimate.

^bHazard ratio based on the stratified Cox PH model.

^cStratified log-rank test two-sided p-value.

^dStratified Wald's Chi-square test two-sided p-value.

Figure 1. Kaplan-Meier Plot of Overall Survival in VISION



16 HOW SUPPLIED/STORAGE AND HANDLING

PLUVICTO Injection containing 1,000 MBq/mL (27 mCi/mL) of lutetium Lu 177 vipivotide tetraxetan is a sterile, preservative-free and clear, colorless to slightly yellow solution for intravenous use supplied in a colorless type I glass 30 mL single-dose vial containing 7.4 GBq (200 mCi) \pm 10% of lutetium Lu 177 vipivotide tetraxetan at the date and time of administration (NDC# 69488-010-61). The solution volume in the vial can range from 7.5 mL to 12.5 mL in order to provide a total of 7.4 GBq (200 mCi) of radioactivity at the date and time of administration.

The product vial is in a lead shielded container (NDC# 69488-010-61) placed in a plastic sealed container. The product is shipped in a type A package (NDC# 69488-010-61).

The shelf life is 120 hours (5 days) from the date and time of calibration.

Store below 30°C (86°F). Do not freeze. Store in the original package to protect from ionizing radiation (lead shielding).

Store PLUVICTO in accordance with local and federal laws on radioactive materials.

Do not use PLUVICTO after the expiration date and time which are stated on the label.

Dispose of any unused medicinal product or waste material in accordance with local and federal laws.

Lutetium-177 may be prepared using two different sources of stable isotopes (either lutetium-176 or ytterbium-176) that require different waste management. Lutetium-177 is prepared using ytterbium-176 (“non-carrier added”) unless otherwise communicated on the product batch release certificate.

17 PATIENT COUNSELING INFORMATION

Risk From Radiation Exposure

Ensure patients increase oral fluid intake and advise patients to void as often as possible to reduce bladder radiation [*see Warnings and Precautions (5.1)*].

Explain the necessary radioprotection precautions that the patient should follow to minimize radiation exposure to others before the patient is released. Following administration of PLUVICTO, advise patients to limit close contact (less than 3 feet) with household contacts for 2 days or with children and pregnant women for 7 days. Following administration of PLUVICTO, advise patients to refrain from sexual activity for 7 days. Following administration of PLUVICTO, advise patients to sleep in a separate bedroom from household contacts for 3 days, from children for 7 days, or from pregnant women for 15 days [*see Warnings and Precautions (5.1)*].

Myelosuppression

Advise patients to contact their healthcare provider for any signs or symptoms of myelosuppression, such as tiredness, weakness, pale skin, shortness of breath, bleeding or bruising more easily than normal or difficulty to stop bleeding, or frequent infections with signs, such as fever, chills, sore throat or mouth ulcers [*see Warnings and Precautions (5.2)*].

Renal Toxicity

Advise patients to remain well hydrated and to urinate frequently before and after administration of PLUVICTO. Advise patients to contact their healthcare provider for any signs or symptoms of renal toxicity, such as passing urine less often than usual or passing much smaller amounts of urine than usual [*see Warnings and Precautions (5.3)*].

Embryo-Fetal Toxicity

Advise patients that PLUVICTO can cause fetal harm [*see Warnings and Precautions (5.4), Use in Specific Populations (8.1)*].

Advise male patients with female partners of reproductive potential to use effective contraception during treatment with PLUVICTO and for 14 weeks after the last dose [*see Warnings and Precautions (5.4), Use in Specific Populations (8.1, 8.3)*].

Infertility

Advise males of reproductive potential that PLUVICTO may cause temporary or permanent infertility [*see Warnings and Precautions (5.5), Use in Specific Populations (8.3)*].

Distributed by:

Advanced Accelerator Applications USA, Inc.

Millburn, NJ 07041

©2022 Advanced Accelerator Applications USA, Inc.

PLUVICTO is a trademark of Novartis AG and/or its affiliates

U.S. Patents 10398791; 10406240; 11318121

T2022-63